



# PDG Flex – Doc Rel 1 & 2



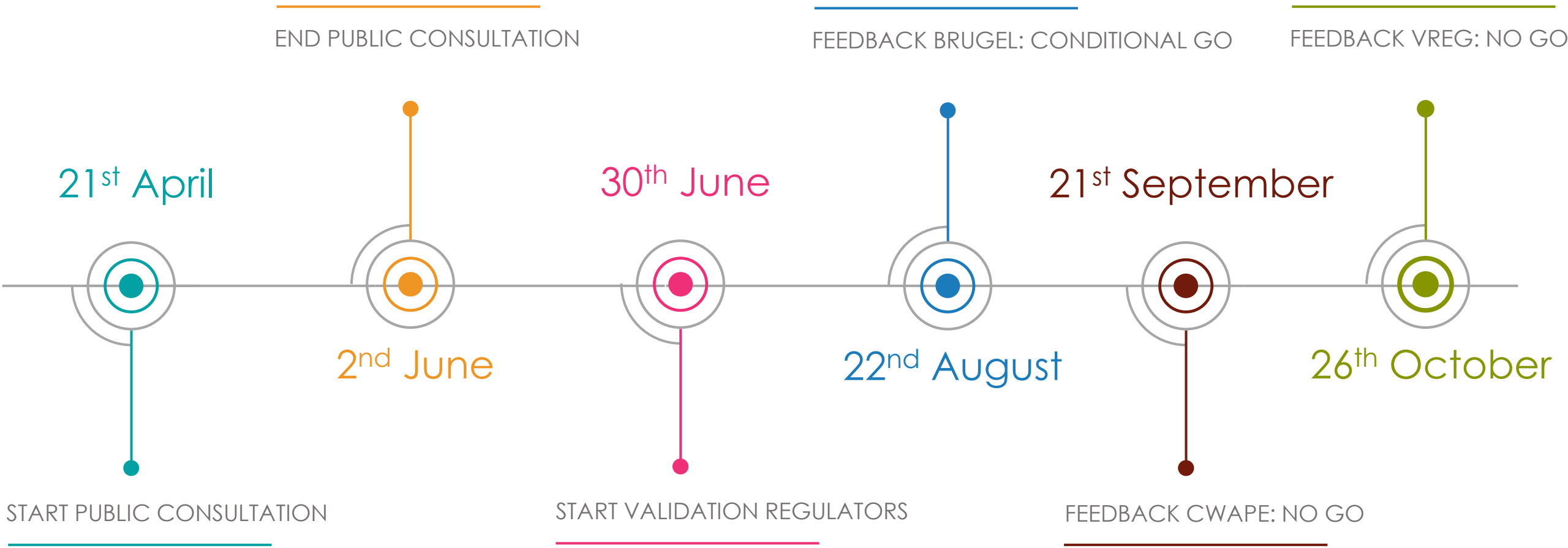
# Agenda

- Status document release 1
- Document release 2
  - Planning and scope
  - CRM 3.0
  - Interactions between Flex & Supply markets
  - aFRR LV implementation
  - aFRR LV metering requirements

# Doc Rel 1



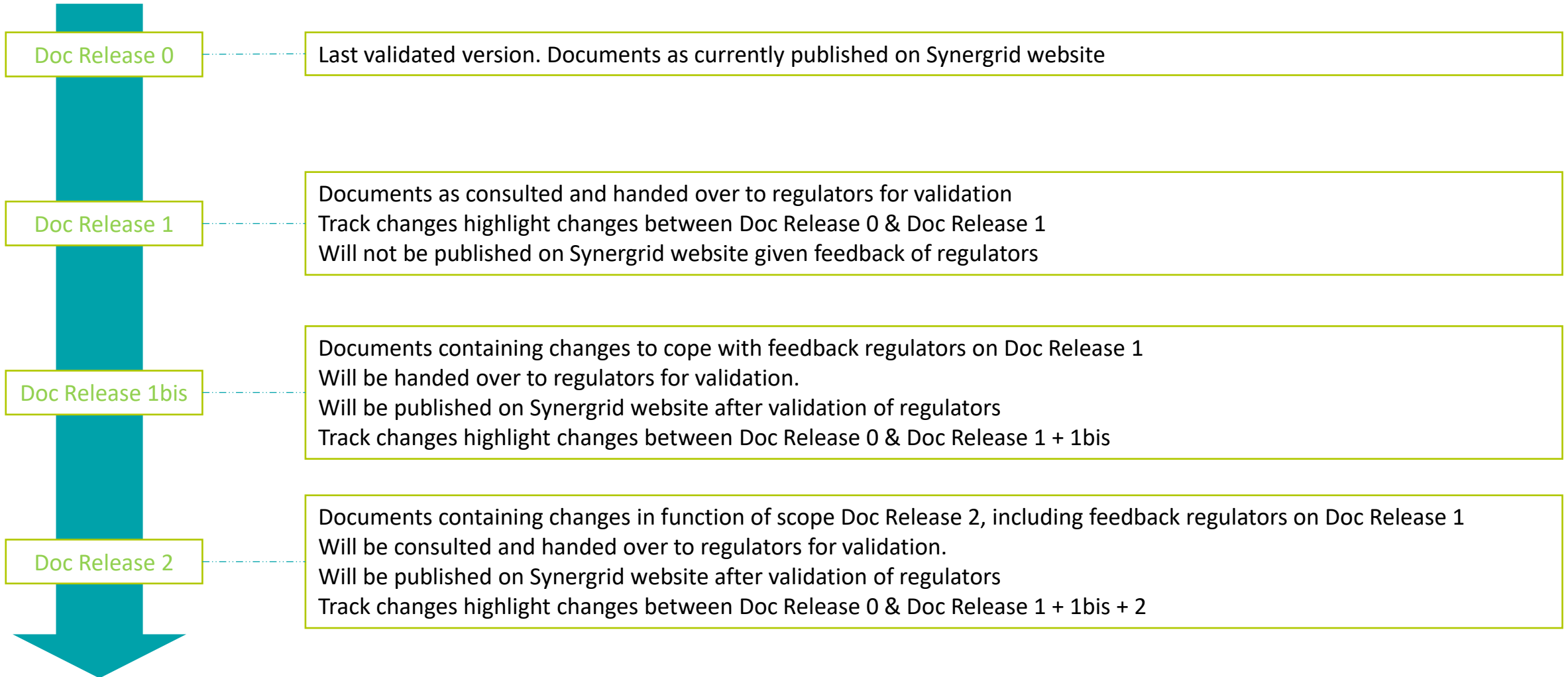
# Timeline –Doc Release 1



# Doc Release 1 – Feedback Regulators

- Doc release 1: submitted on 30/06/2023
- Brugel (24/08/2023): Accepted with conditions on modifications of documents
- Cwape (22/09/2023): Rejected with requested modifications of documents
- Vreg (26/10/2023): Rejected with requested modifications of documents

# Way Forward



# Doc Rel 2

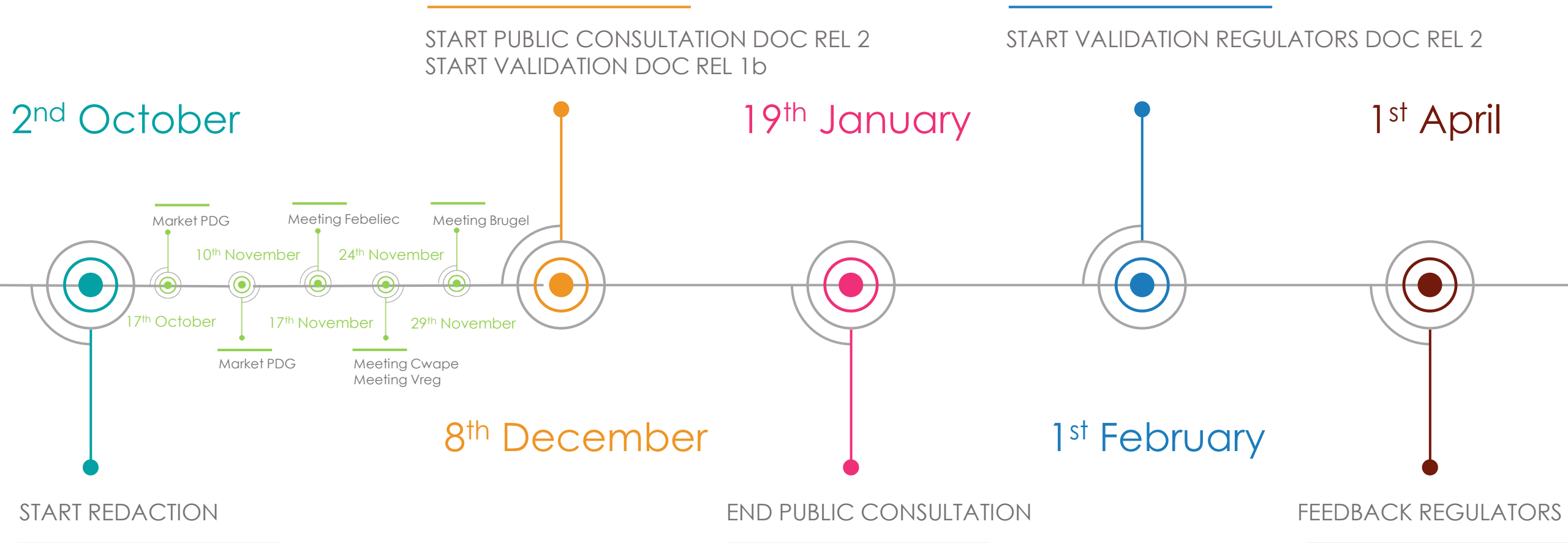


# Pro Memori: Doc Release 2 approach

- Redaction timeboxed in 10 weeks:
  - scope can alter in function of timing
- After sprint 2 & 6: PDG market (inform)
- After sprint 6: dialogue with regulators
- After sprint 10: stakeholders meeting (acts as start of consultation period)



# Timeline – Doc Release 2



# Projected Scope Doc Rel 2

- Previous sprints (see next slides):
  - Implementation of aFRR LV (onboarding & grouping) including Impact of mig 6 Scenario's (such as move out)
  - CRM 3.0
  - aFRR LV Metering Requirements
- Next sprints:
  - Remarks of regulators on Doc Release 1
  - Calculated meter
  - Remarks CDSO in close collaboration with Febeliec
  - Enhancement of Description of prequalification and NFS

# CRM 3.0



# CRM: Additional / Existing Delivery Point

For CRM LV, a FSP can onboard Flex points which are not 'ready' yet.

Following concepts are introduced in the MG Flex:

*(Definitions -> CRM Functioning rules)*

- **Additional DP:** a Delivery Point connected to a capacity for which – on the moment of Prequalification submission – no representative NRP can be calculated yet based on 15 minute metering data.
- **Existing DP:** a Delivery Point connected to a capacity for which – on the moment of Prequalification submission – a representative NRP can be calculated based on 15 minute metering data.

=> For additional DP's, the Declared NRP will be used until the DP becomes existing

Example:

Battery installed in HouseHold A but not smart meter yet => Additional DP => use declared NRP

When Smart meter is installed and 15' data is available => Existing DP => calculate NRP based on 15' data

# Interactions between flex and supply markets



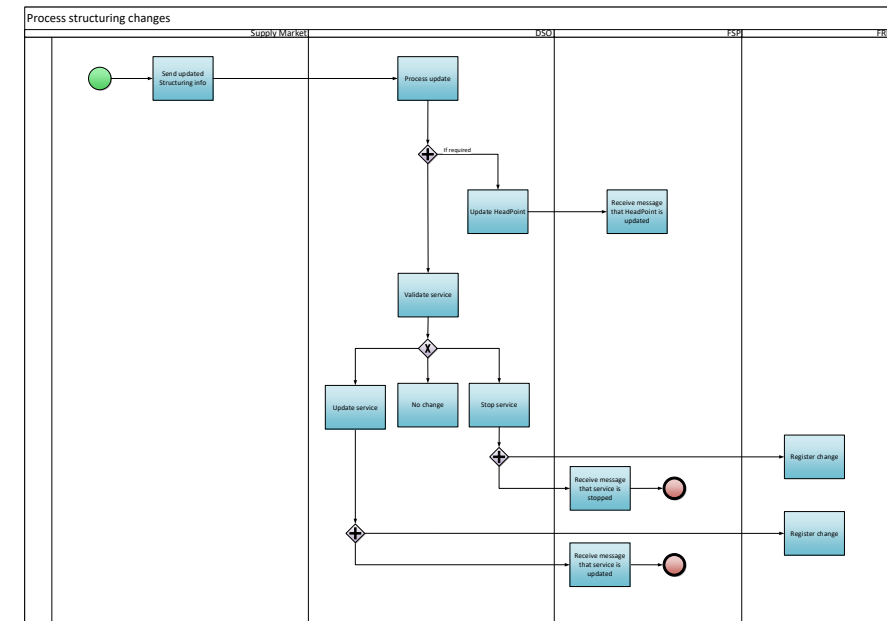
# Interactions with supply market

MG Flex: New chapter added which describes the impact of Structure modules from the supply market.

Description of impact per Module

Module	Label	Impacted Flex process	Remark
<b>Activations</b>			
Move in		/	Flex not possible before move in
Activate HeadPoint			
<b>Switches</b>			
Start Access			
	Supplier Switch	Stop service	The SDP-Flex will only be ended if the validation of the SDP-Flex fails due to the updated supplier.
	Customer Switch	Stop service	
	Combined Switch	Stop service	
<b>Initiate Local Production</b>			
	Supplier Switch	Stop service	The SDP-Flex will only be ended if the validation of the SDP-Flex fails due to the updated supplier.
	Customer Switch	Stop service	
	Combined Switch	Stop service	
<b>Update BRP</b>			
Update BRP		Stop service	The SDP-Flex will only be ended if the validation of the SDP-Flex fails due to the updated BRP.
Initiate Leaving Customer		Stop service	
<b>Updates</b>			
Update Customer Metering Configuration		Stop service	The SDP-Flex will only be ended if the validation of the SDP-Flex fails due to the metering configuration.
Update Business Master Data		/	
Update HeadPoint			
Update Technical Master Data		Update service	
Initiate Update Access		/	
<b>Deactivations</b>			
Move Out		Stop service	
Deactivate HeadPoint			
Initiate Stop Access		Stop service	
<b>Other</b>			
Cancel		Stop or updated service	See the relevant cancelled process
Request rectification		Stop or updated service	See the relevant rectified process
Preswitching		/	
Request start		/	

Process flow



# aFRR LV implementation



# Pooling & Aggregation via LV Delivery Point Group

To efficiently handle large numbers of Delivery Points on LV, the concept of 'Low Voltage Delivery Point Group' is introduced.

## Low Voltage Delivery Point Group:

“A group of Service Delivery Point Flex (SDP-Flex) for 1 flexibility product – connected to the LV grid – which can be used for the simplification of pool management and aggregation of metering data”

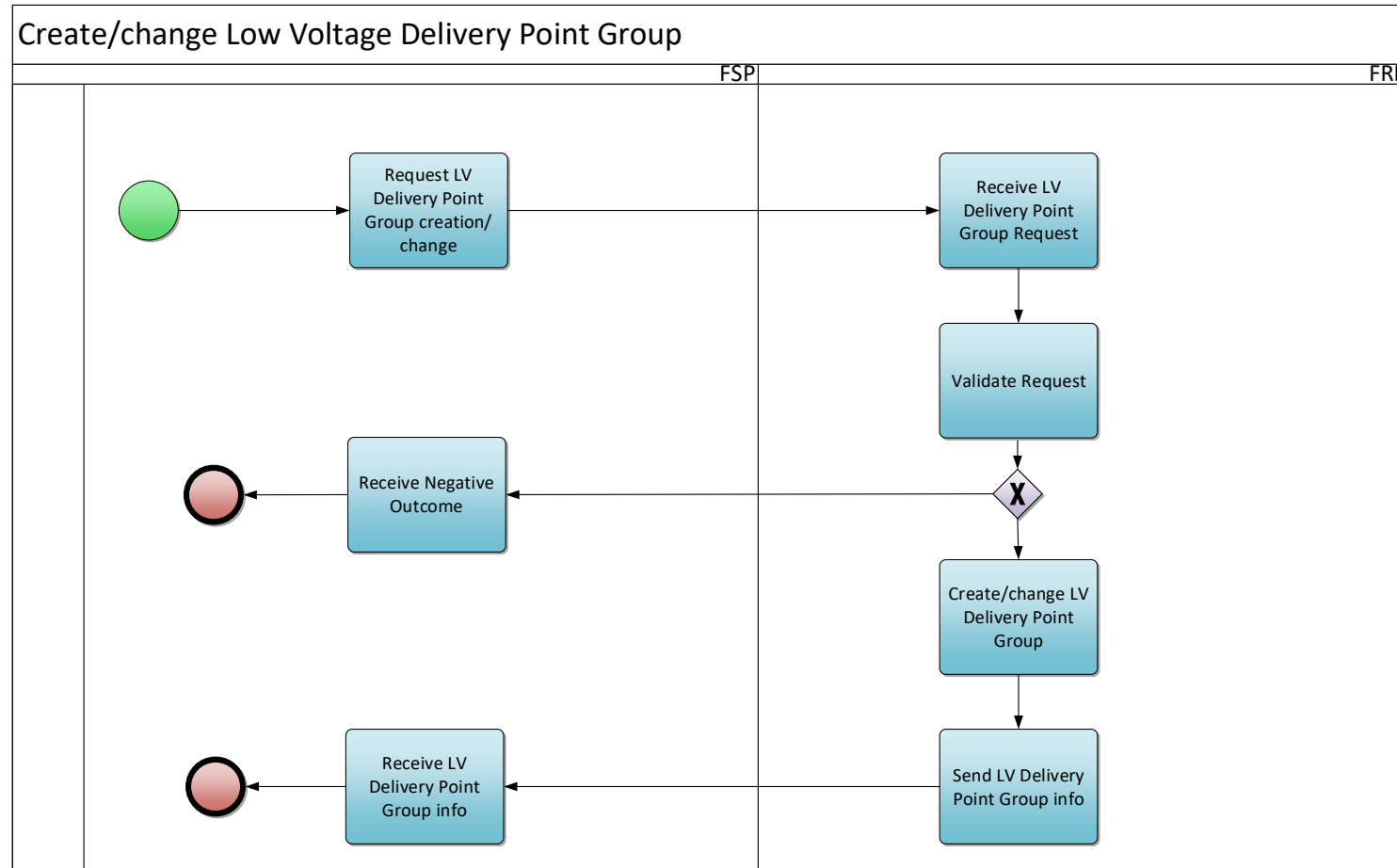
A LV Delivery Point Group has a unique identifier (EAN) and is linked with a single:

- FRP
- FSP
- Product



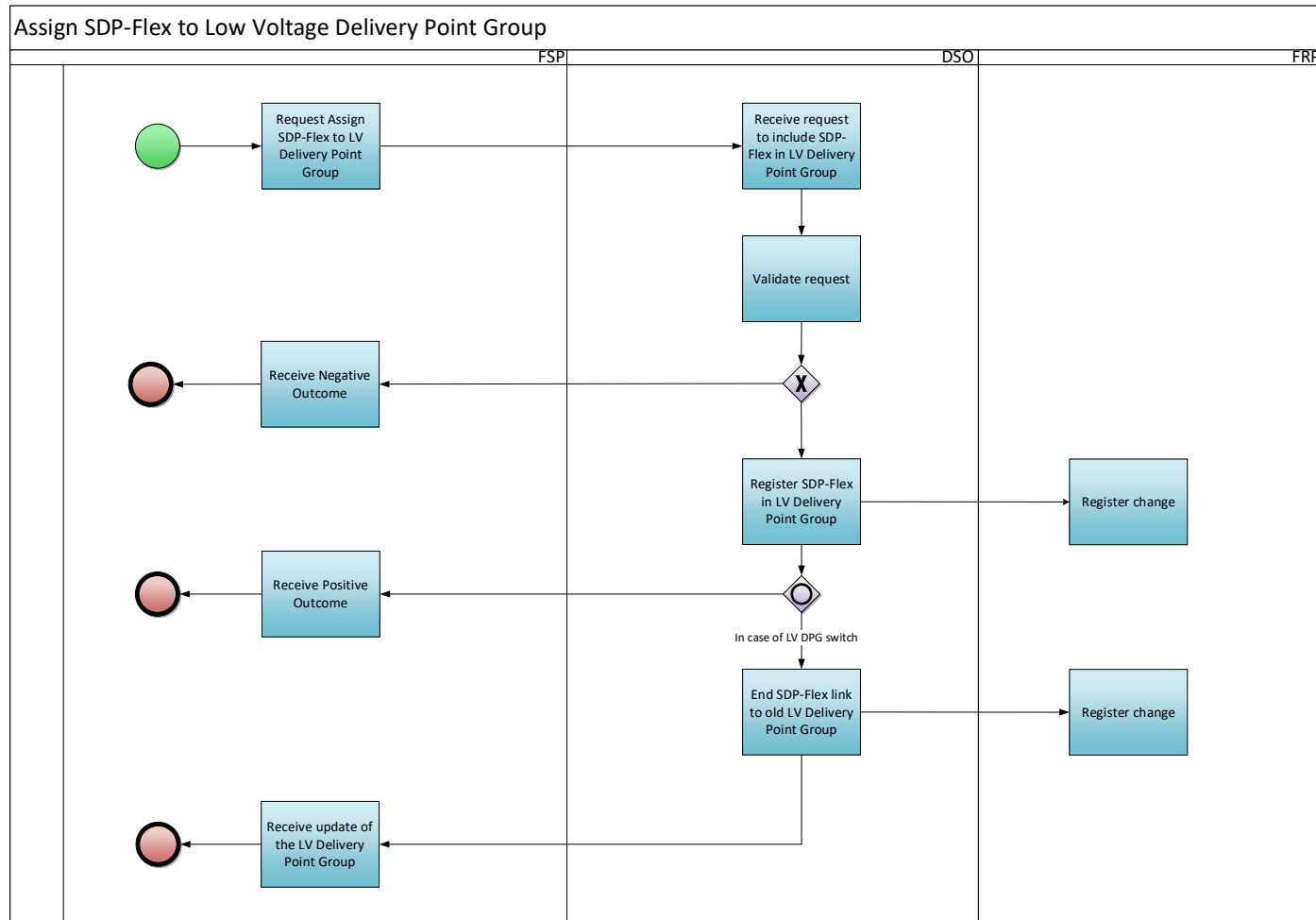
# Step 1: Create/change a LV Delivery Point Group

The FSP can request FRP (Elia) to create a LV Delivery Point Group for its pool.



# Step 2: Assign a SDP-Flex to a LV Delivery Point Group

When the LV Delivery Point Group is created, the FSP can start assigning Flex points to it and can update the LV Delivery Point Group at all time.



# Automate Onboarding process for LV

## As-is

Depending on the product, FSP's need to send the onboarding request via:

- FlexHub Portal
- Mail
- csv

=> Different formats make it difficult to automate for both FSP as SO.

## To-be

Automation of the Flex onboarding process.

=> for LV, first step towards automation by allowing a 'unified' request via:

- FlexHub Portal
- API

Unified request: a single request to create HP/DP/SDP & assign SDP to a LV Delivery Point group

*Conversion will be tackled product per product. In the meantime, existing request formats remain allowed.*

# aFRR LV metering requirements



# Context

## Unlocking potential of aFRR at low voltage

### As-is metering requirements for LV assets:

- Use of power meters (kW/MW)
- FSP – DSO contract -> C8/06 -> TRDE -> KB 2016 -> MID compliant meter required

### Market feedback document release 1

- Metering requirements too strict for participation
- Cost of installing additional MID compliant power meter kills business case
- Embedded metering per definition not in line with MID

# Responsibility metering requirement

## Extract TRDE:

§2. De meetuitrusting waarvan de meetresultaten worden gebruikt voor de berekening van het aantal toe te kennen groenestroom- en/of warmtekrachtcertificaten en garanties van oorsprong (in uitvoering van het Energiebesluit) of ten behoeve van het vermarkten van flexibiliteit die een energieoverdracht met zich meebrengt moet voldoen aan de vereisten vermeld in Bijlage III Vereisten voor meetuitrustingen.

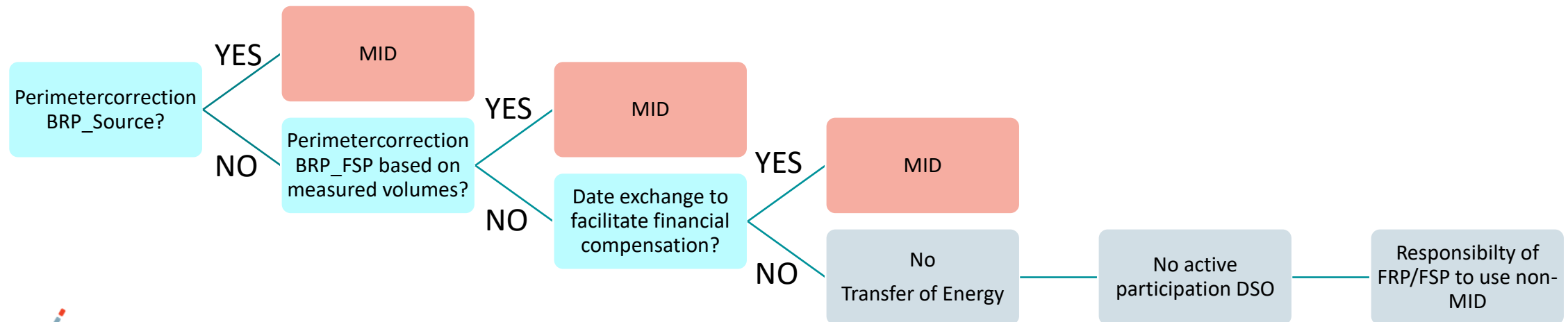
§2./1 De meetuitrusting waarvan de meetresultaten worden gebruikt ten behoeve van het vermarkten van flexibiliteit die geen energieoverdracht met zich meebrengt moet voldoen aan de vereisten vermeld in Bijlage III Vereisten voor meetuitrustingen, tenzij de aanvrager van flexibiliteit, in overleg met de elektriciteitsdistributienetbeheerder, een afwijking hierop toestaat.

Considering that fast track aFRR LV is imposing opt-out solution an exoneration from bijlage 3 of the TRDE is authorized.

The FRP (ELIA) is responsible for defining the measurement criteria in case no ToE applies

# Proposal submetering requirements – aFRR without ToE

- DSOs & TSO have commonly agreed:
  - For Fast Track aFRR on LV
  - MID requirements are not required as long as
    - Regime Opt\_Out is mandatory on aFRR
    - Not in conflict with EMD Reform (cfr Dedicated Measurement Devices)
    - Not in conflict with any regulations
  - Elia is mandated to define new metering requirements for Fast Track aFRR on LV



# Proposal submetering requirements – aFRR without ToE

Connecting power	Voltage level to which the submeter device is connected	Minimum accuracy class of components in the submeter device		
		TP	TI	Watt meter
< 100 kVA	LV	NA	0,5	See table
	LV	NA	NA	

Connecting power kW	Requirement inaccuracy [IEC terminology]
≥ 32 < 100	2%
≥ 11 < 32	3.5%
≥ 4 < 11	6%
< 4	10%

## Assumption:

- Small assets are combined in a **portfolio with a minimum bid size of 100 kW**
- The minimum portfolio accuracy is simulated **to be compliant to the IEC norm 2%**, the MID compliancy is not required on individual asset level



# Next steps



# Next Steps

- Informal feedback stakeholders on presentation PDG 10/11 can be sent to Synergrid
- Next sprints:
  - Remarks of regulators on Doc Release 1
  - Calculated meter
  - Remarks CDSO in close collaboration with Febeliec
  - Enhancement of Description of prequalification and NFS
- Dialogue with regional regulators
- 8<sup>th</sup> December: PDG/stakeholders meeting + Start consultation

Thank you for your participation

